

# Tenneo

Learning Platforms

## THE AI REVOLUTION TRANSFORMING WORKFORCE LEARNING ..... WITH AN AI-POWERED LMS .....





# Chapter 01

## Introduction

Imagine stepping into a world where every employee receives personalized learning experiences tailored specifically to their needs, where virtual coaches provide real-time feedback, and where content is created and updated seamlessly. This isn't a far-off dream— it's the transformative power of AI-powered LMS.

In this eBook, "The AI Revolution: Transforming Workforce Learning with an AI-powered LMS," we'll explore how generative AI, intelligent content creation, and advanced analytics are making learning matter and reshaping the landscape of employee learning and development. Through this eBook, you'll discover practical insights and strategies to harness the full potential of AI in your organization's learning and development programs. Prepare to embark on a journey that will change the way you think about employee training programs.





# Chapter 02

## AI Agents & Coaching: Leveraging the power of Gen AI for virtual coaching

Are you noticing an unprecedented need for personalized learning experiences among your workforce? Traditional training methods may be falling short in providing the adaptability and individualized attention required to truly engage employees. But fear not! Generative AI agents have brought forth a new era of personalized learning and virtual coaching. Now, organizations can make learning matter and offer bespoke support to their workforce on a massive scale. The AI-powered LMS offers learning assistants that can provide personalized inputs to empower seamless success.

### Need for Personalization:

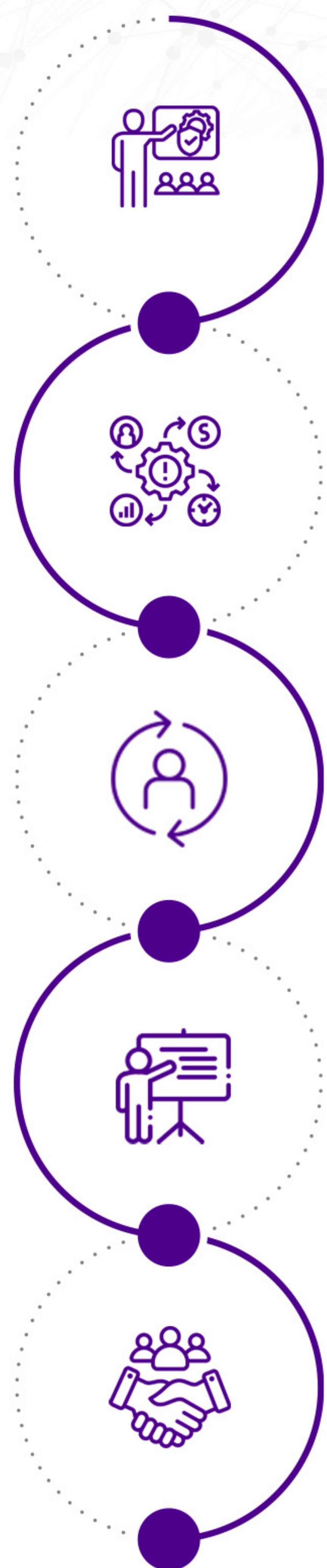
The heart of effective learning lies in personalization. Employees crave interactions that cater to their unique needs and preferences, yet many training programs fail to deliver this level of customization. Organizations fail to deliver personalization when the learning is scaled to higher volume. They struggle to provide one-on-one interaction between learners and instructors, leading to a disconnect between training content and individual needs. Training is restricted to either self-based learning or classroom training. However, the true meaning of personalization lies in the employee's ability to be able to interact with the learning system and get relevant responses.

Imagine a scenario where a sales executive is struggling to grasp a new product line. With an AI-powered LMS, they can engage in a dynamic conversation tailored to their specific challenges and learning pace. Through personalized coaching AI agents, organizations can elevate training engagement and foster a culture of continuous learning.





# Understanding the Need for Personalization through Numbers



On average, companies spend **\$1280** per employee on workplace learning.  
**Source: ATD**

Only **12%** of employees are able to apply new skills learned in L&D programs to their job roles effectively.  
**Source: Harvard Business Review**

**93%** of high performing organizations agreed personalization helps in reaching professional goals more efficiently.  
**Source: People Matters**

**91%** of employees want personalized training that's relevant to their position.  
**Source: HR Drive**

**77%** Of L&D professionals think personalized learning is vital to employee engagement.  
**Source: eLearning Industry**

## Use of Generative AI:

Generative AI agents serve as virtual mentors, guiding employees through their learning journeys with personalized insights and recommendations. These AI-powered LMS assistants can adapt to different learning styles and preferences, providing real-time feedback and support. Unlike traditional chatbots with predefined responses, Gen AI agents can engage in real, meaningful interactions, enhancing training engagement and fostering a deeper connection with learners.

For instance, a customer service representative seeking guidance on handling difficult customer interactions can turn to a virtual coach powered by Generative AI. The coach analyzes past interactions, identifies areas for improvement, and offers targeted advice to enhance performance.



## Nudges Based on Data Insights:

Data-driven nudges play a vital role in keeping employees motivated and on track with their learning goals. An AI-powered LMS leverages data insights to deliver tailored nudges that resonate with individual preferences and learning objectives. These nudges go beyond generic recommendations, providing specific guidance and support that address the unique needs of each learner. By incorporating data-driven nudges into the learning experience, organizations can maximize employee engagement and drive better outcomes.

## Automation for Time Efficiency:

One of the key benefits of an AI-powered LMS that leverages Generative AI agents is the ability to automate repetitive tasks, saving valuable time for trainers and administrators. These AI-powered assistants streamline content creation, course assignments, and administrative workflows, allowing L&D professionals to focus on strategic initiatives. Generative AI can automate work activities that absorb **60-70% of employees' time**.

Consider a scenario where an HR manager needs to onboard new employees efficiently. By leveraging Generative AI agents, they can automate the onboarding process, delivering personalized training modules tailored to each employee's role and responsibilities.

## Use Case on Gen AI Agent Coaching:

Let's explore a practical use case of an AI-powered LMS with generative AI agents in the L&D industry. Imagine a multinational corporation rolling out a new compliance training program. With thousands of employees spread across different locations, delivering personalized coaching at scale presents a significant challenge.

Enter Generative AI agents. These virtual coaches analyze employee data, identify compliance gaps, and deliver targeted training modules tailored to each employee's role. Through personalized coaching, the organization ensures compliance adherence while fostering a culture of continuous learning.

Generative AI agents are transforming the way organizations approach employee learning and development. We, at Tenneo, have already begun the journey towards AI virtual coaching agents with our AI-powered LMS.

Our Tenneo Assistant, powered by Generative AI, serves as your virtual LMS expert, providing personalized guidance and support to users. Whether you're an administrator seeking to streamline workflows or an employee looking for tailored training recommendations, Tenneo Assistant is here to help.

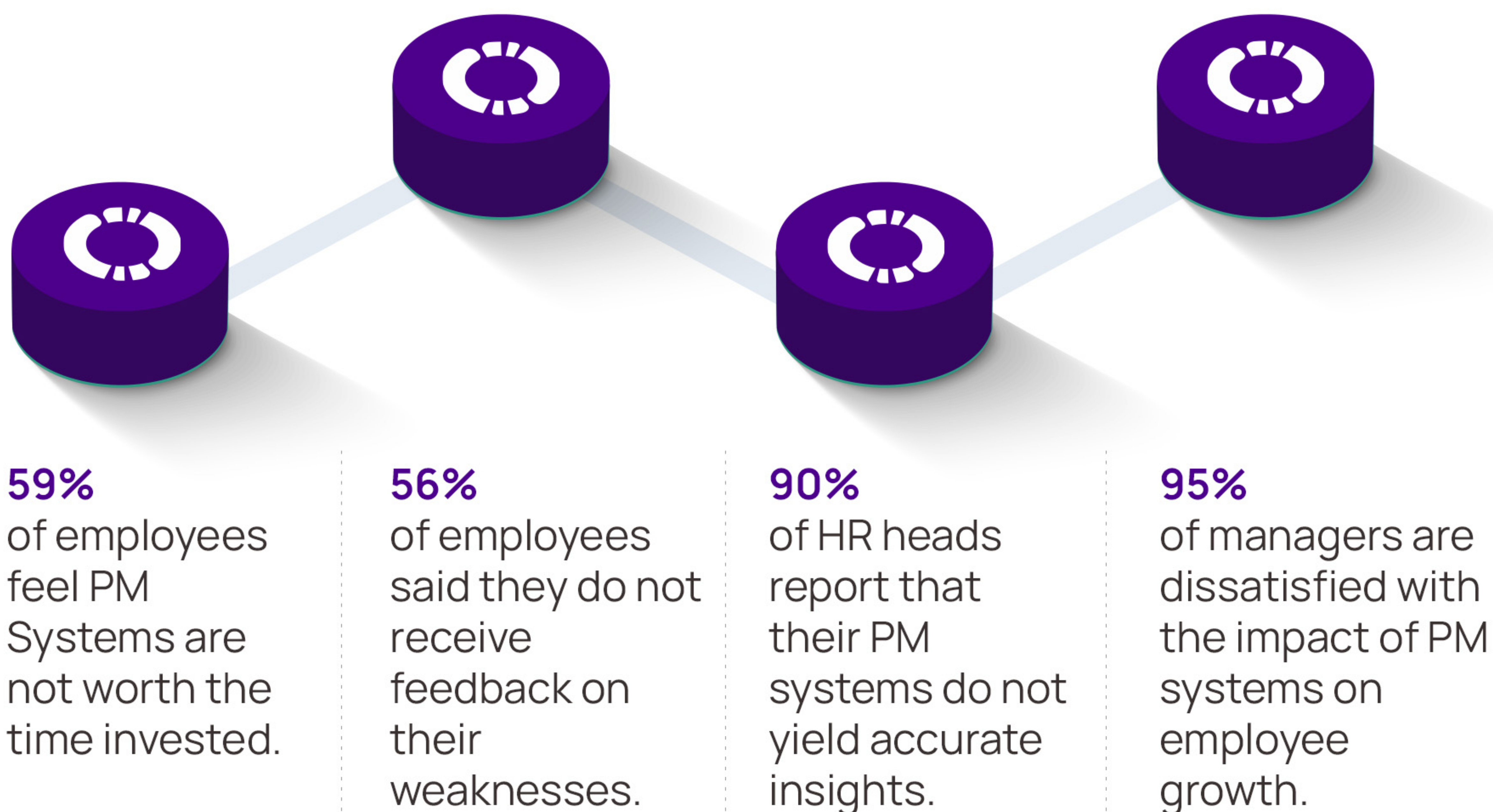


# Chapter 03

## Role of AI-powered Assessments & Evaluation in Employee Learning Success

Are your employees truly mastering new skills and knowledge, or are they merely going through the motions? In order to redefine learning and achieve seamless success, you must measure the learning progress. Accurate assessments and AI-driven learning evaluations are more critical than ever for linking learning with performance. But traditional methods often fall short, leaving L&D leaders grappling with challenges like lack of real-time feedback and ineffective evaluation processes.

### Dissatisfaction with the Employee Performance Management Systems





# Challenges in Employee Assessments & Evaluation:

## No Real-Time Feedback

Traditional assessment methods often provide feedback long after the learning opportunity has passed. This delay can significantly hinder employees' ability to course-correct and improve in a timely manner, resulting in missed opportunities for skill development and growth. Without immediate feedback, employees may continue to reinforce incorrect behaviors or misunderstandings, leading to prolonged learning curves and reduced effectiveness in their roles.

## Limited Personalization

One-size-fits-all evaluation processes fail to address the unique learning needs and preferences of individual employees, resulting in suboptimal outcomes. When assessments are not personalized, employees may feel disengaged and unmotivated to participate fully in the learning process. Lack of AI-driven learning evaluation can lead to reduced knowledge retention and application of skills in real-world scenarios, ultimately hindering organizational performance and growth.

## Human Bias & Errors

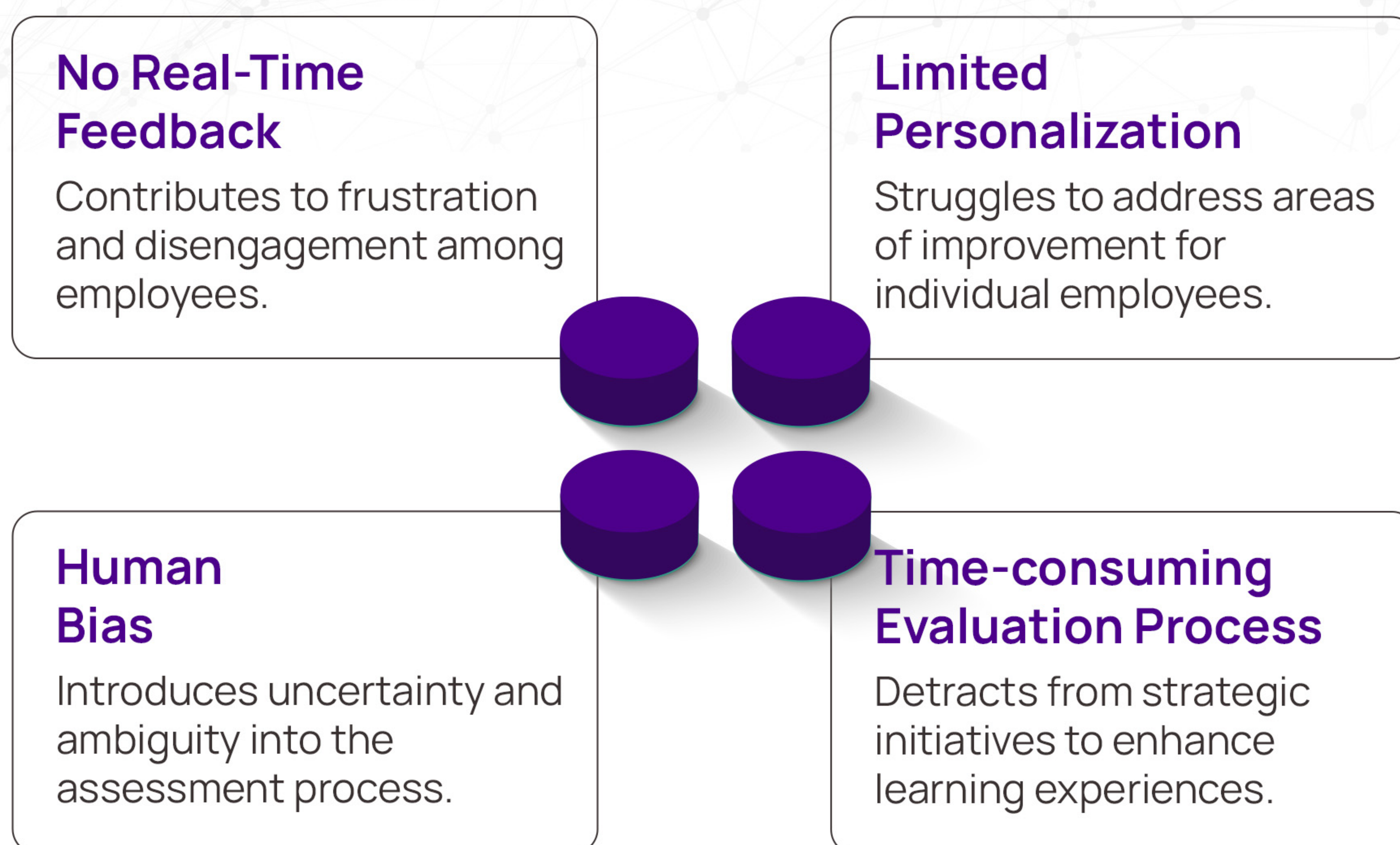
Human bias can influence assessment outcomes, leading to inconsistencies and inaccuracies in performance evaluation. When assessments are subject to bias, employees may feel unfairly judged or marginalized based on factors outside of their control, such as gender, ethnicity, or personal relationships. This can erode trust in the assessment process and undermine employee morale and confidence in their abilities.

## Time-consuming Evaluation Processes

Manual assessment and evaluation tasks consume valuable time and resources, delaying feedback and impeding learning progress. The administrative burden of manual evaluation processes can overwhelm L&D professionals, leaving them with limited capacity to provide timely support and guidance to employees. Without AI-driven employee upskilling employees are left waiting for feedback and support to address their learning needs.



# How Poor Assessments & Evaluations Hamper Employee Growth



## How AI-powered Assessments & Evaluations Help:

### Real-Time Feedback

AI algorithms analyze learner performance instantly and provide actionable feedback that enables immediate course correction and skill improvement. Enhanced learning through AI evaluation ensures that employees receive timely guidance and support to accelerate their learning journey.

### Personalized Learning Paths

AI-driven LMS platforms leverage machine learning algorithms to tailor assessments and evaluations to individual learning styles and preferences. By offering targeted support and personalized learning paths, AI-powered assessments maximize learning effectiveness and drive continuous improvement.



## Objective Evaluation Metrics

Leveraging AI in employee learning assessments helps in overcoming human bias. AI algorithms eliminate errors by objectively evaluating performance based on predefined criteria. This ensures fair and consistent assessments, enabling organizations to accurately measure employee learning outcomes and identify areas for improvement.

## Automated Evaluation Processes

AI-powered LMS platforms automate assessment tasks, streamlining evaluation processes and freeing up valuable time for L&D professionals. By automating repetitive tasks, AI in employee learning assessments enables L&D teams to focus on strategic initiatives and learner support, ultimately driving better learning outcomes.

## How Poor Assessments & Evaluations Hamper Employee Growth



Eliminates human bias & errors



Provides data-driven insights



Enables continuous analysis & evaluation



Streamlines the feedback process



Enhances L&D outcomes



Boosts employee engagement & morale

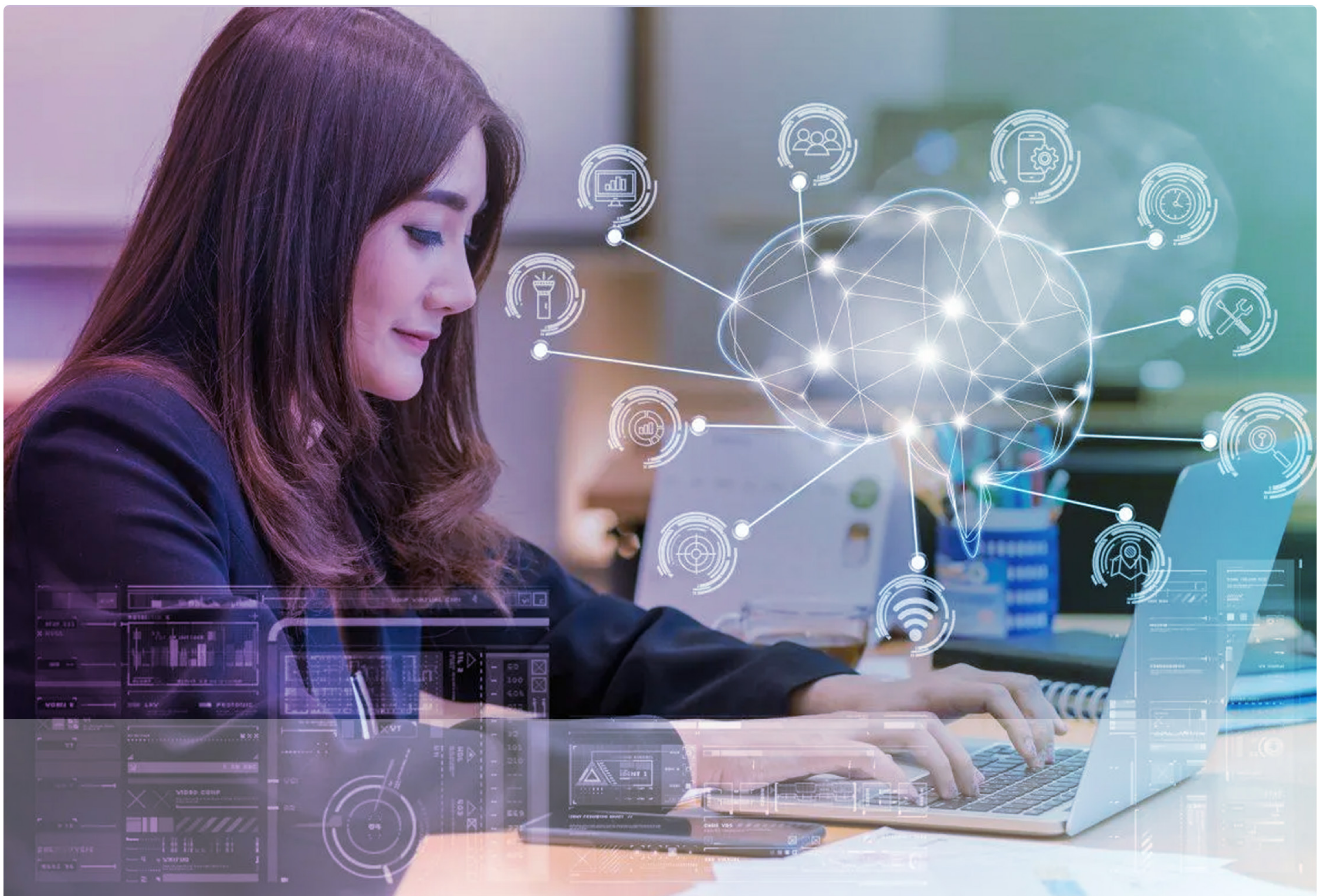


# Video Assessments & Roleplays: Revolutionizing AI-powered Assessments

AI-powered video assessments and roleplays offer immersive, interactive learning experiences that simulate real-world scenarios. These innovative tools analyze pitch, tone, body language, and facial expressions in recorded videos, offering personalized feedback to employees to enhance their communication and sales skills.

AI-powered roleplays offer customized scenarios tailored to specific products and sales methodologies, allowing employees to practice and refine their skills in a risk-free environment. By providing targeted practice opportunities and real-time feedback, AI-driven roleplays elevate sales conversations and drive better learning outcomes.

As the importance of AI-powered assessments and evaluations continues to grow, Tenneo remains committed to redefining learning. Our AI-powered LMS leverages cutting-edge technology to deliver personalized, effective assessments and evaluations that drive learning success. By embracing AI-driven learning evaluation, organizations can unlock the full potential of their workforce and achieve their business objectives.





# Chapter 04

## AI-Powered Content Creation: Crafting Dynamic Learning Experiences for Modern-day Workforce

Are you struggling to create engaging, error-free training content instantly? Is your organization finding it difficult to keep up with the rapid demands of workforce learning? Traditional content creation methods can be time-consuming and prone to errors, ultimately hindering employee learning outcomes.

Today, organizations need training content that links with performance and makes learning matter. AI-powered content creation will not only enhance learning outcomes but also empower your workforce to achieve seamless success. This is where an AI-powered LMS with Generative AI capabilities can redefine content creation and make it easier for organizations to deliver high-quality learning materials.

### The Hype is Real: Growing Importance of Generative AI in Employee Learning

The Gen AI market size will hit **USD 110.8 Billion** by 2030.  
**Source:** DeepBrain AI

Using Gen AI improves employee performance by **66%.**  
**Source:** Nielsen Norman Group

**79%** of business leaders believe Gen AI will reduce workload.  
**Source:** Salesforce



Gen AI can improve a highly skilled worker's performance by **40%.**  
**Source:** MIT

Gen AI can automate tasks to save **60-70%** of employees' time.  
**Source:** McKinsey

**84%** of IT leaders believe Gen AI will help improve customer service  
**Source:** Salesforce



# Role of Generative AI in Content Creation

Generative AI has revolutionized the way we approach content creation for employee training. Today, learning platforms can provide AI-driven virtual coaching. By automating repetitive tasks and providing intelligent assistance, Generative AI develops personalized and high-quality learning materials quickly and efficiently. Let's explore how these advanced capabilities can transform the content creation process.

## Generative AI-based Admin Assistant



The Generative AI-based Admin Assistant automates various administrative tasks using natural language processing. This capability is vital in cutting down the manual workload and reducing errors linked to repetitive administrative duties. By automating these processes, administrators can redirect their focus to strategic initiatives and improving the overall learning experience. This results in more dynamic AI learning experiences for employees.

## Context-sensitive Prompts



Context-sensitive prompts offer users personalized guidance and instructions tailored to the specific page they are on within the LMS. This feature negates the need for users to hunt down help documentation or external tutorials. By delivering relevant guidance directly within the interface, it boosts user efficiency and shortens the learning curve associated with navigating the LMS. This level of AI in workforce learning ensures that employees have the support they need at their fingertips, enhancing their overall learning journey.

## Create Publish-ready Courses



Creating publish-ready courses include generating suggestions for course titles, writing course descriptions, outlining learning goals, and even creating thumbnails. This feature allows instructors to concentrate on developing course material while reducing the time spent on administrative tasks. With AI-powered content creation, organizations can keep their training materials fresh, updated and engaging.

## Instant Query Redressal



An LMS equipped with Generative AI capabilities allows users to ask questions or seek assistance directly within the platform. It utilizes natural language processing to provide immediate responses. This on-demand support is essential for enhancing the user experience and creating a supportive learning environment. Quick resolution of queries and issues increases learner engagement and confidence in using the LMS.



# Tenneo LMS Leverages Generative AI to Enhance Learning Experiences

**Generative AI-based Admin Assistant**  
Provides contextual prompts & guidance for frequent tasks.

**Create Publish-ready Courses**  
Generates titles, descriptions & learning objectives.

**Context-sensitive Prompts**  
Ensures timely assistance as users navigate the platform.

**Instant Query Redressal**  
Provides assistance through free-text inquiries.

## Tenneo LMS Introduces Tenneo Learning Assistant

The Tenneo Assistant, powered by Generative AI, is crafted to improve learning outcomes by automating tasks and generating content instantly. This intelligent assistant offers context-sensitive prompts tailored to users' actions within the platform, reducing the need for separate help documentation. By providing timely guidance, it streamlines the onboarding process, enhances user efficiency, and simplifies navigation, resulting in effective and engaging dynamic AI learning experiences.

Moreover, Tenneo LMS features instant query redressal, allowing users to seek assistance directly within the LMS interface. This immediate support enhances the learning environment, boosts user confidence, and ensures smooth navigation of the platform. These functionalities help new employees acclimate quickly, achieve proficiency faster, and contribute to the organization's success from the start.



## Tenneo LMS Integration with Canva

Tenneo LMS's integration with Canva brings a wealth of AI-powered features that significantly enhance content creation capabilities. Canva's Generative AI tools allow users to quickly create visually appealing and effective learning materials. By leveraging these capabilities, organizations can ensure that their content is not only educational but also engaging and visually attractive. This integration streamlines the content creation process, enabling instructors and administrators to develop high-quality learning materials swiftly. This integration showcases the potential of AI-powered content creation in transforming traditional learning processes.





# Chapter 05

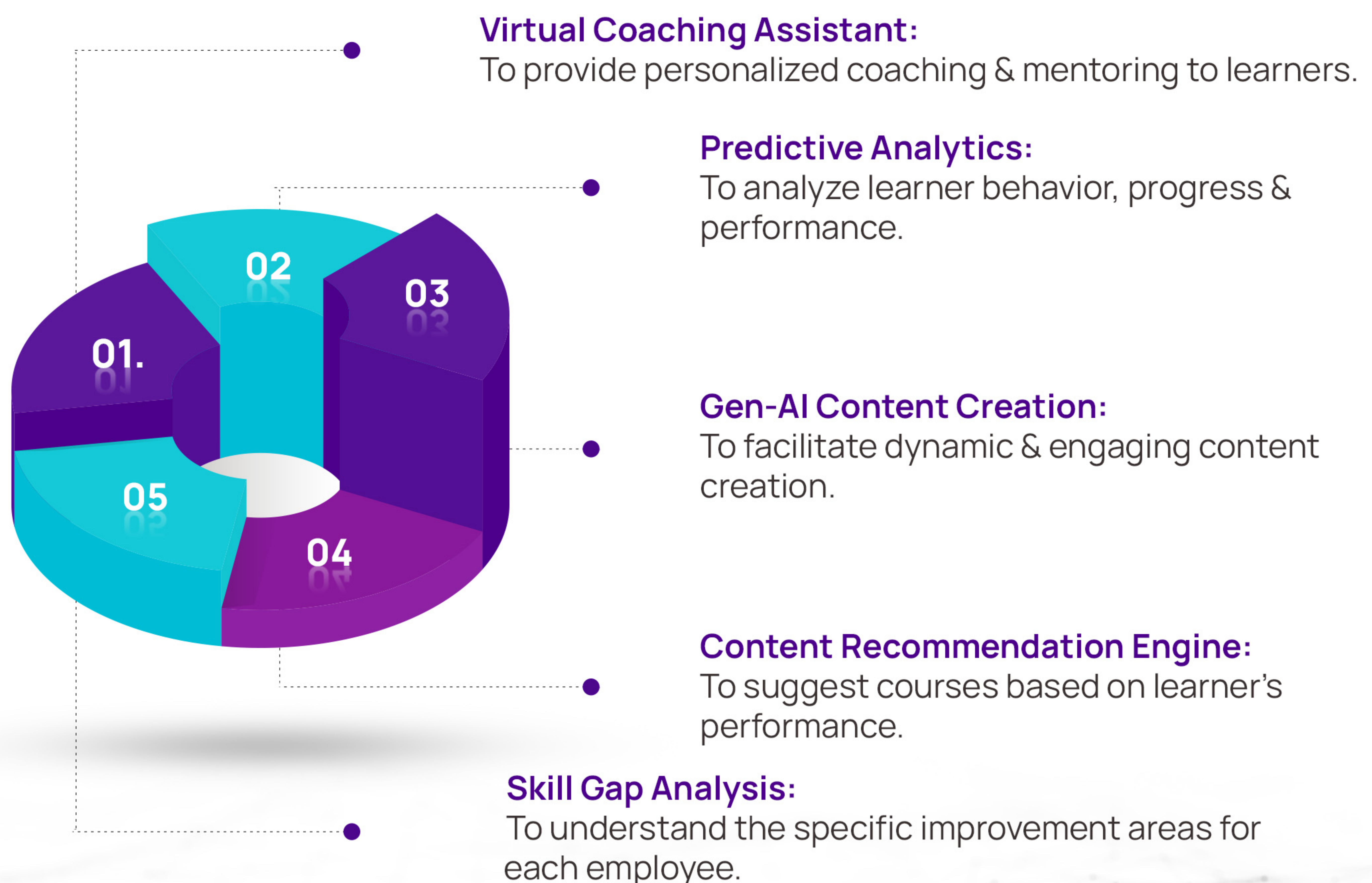
## The LMS Checklist 5 Things to Look for While Choosing an AI-powered Learning Platform

Is your current training platform struggling to keep up with the rapid pace of technological change? Do you find it challenging to provide personalized, effective learning experiences for your employees? If so, it's time to consider an AI-powered learning platform.

Today, when technological advancements are reshaping industries, the importance of AI capabilities in making learning matter cannot be overstated. Traditional learning systems often fall short of meeting the dynamic needs of modern workplaces and linking learning with performance. This is where AI steps in, transforming how we learn, teach, and grow professionally.

So, what should you look for when evaluating AI learning systems? Here's a comprehensive guide to help you make an informed decision and empower your workforce to achieve seamless success.

### AI LMS Selection Guide: Things to Consider While Choosing an AI-powered LMS





# 01. Generative AI-Powered Virtual Coaching Assistant

A top-tier AI-powered learning platform should include a generative AI-powered virtual coaching assistant. This feature leverages AI to provide personalized coaching and mentoring to learners. The virtual coach can analyze an individual's performance, identify areas for improvement, and offer tailored guidance to help them achieve their goals.

## Why is it important?

Choosing an AI-powered LMS with a virtual coach ensures that learners receive real-time feedback and support, enhancing their learning experience and engagement. It's like having a personal tutor available 24/7, which can significantly boost employee growth and productivity. For example, sales representatives can benefit from role-playing scenarios where the AI coach provides instant feedback on their pitches, helping them refine their skills and improve performance.

# 02. AI-Powered Analytics

One of the most essential features of an AI-driven LMS is robust AI-powered analytics. This tool collects and analyzes vast amounts of data on learner behavior, progress, and performance. Choosing an AI-powered LMS will provide you with valuable insights that help in informed decision-making and learning strategy.

## Why is it important?

AI-powered analytics help organizations track the effectiveness of their training programs, identify knowledge gaps, and tailor learning paths to individual needs. This data-driven approach ensures that training is relevant, effective, and aligned with organizational goals. For instance, if analytics reveal that a particular module is consistently challenging for learners, the content can be revised for clarity or additional support can be provided.

# 03. AI-Powered Content Creation

In today's digital age, content is king. An AI-powered learning platform should facilitate dynamic content creation, allowing for the quick development and deployment of engaging learning materials. While choosing an AI-powered LMS, Generative AI content creation capabilities must be one of your priorities while evaluating AI learning systems.

## Why is it important?

AI-powered content creation tools can generate course titles, descriptions, learning objectives, and even multimedia elements, saving time and ensuring consistency and quality. This capability is crucial for keeping training programs up-to-date and relevant. For example, in rapidly evolving fields like technology or healthcare, the ability to quickly update training materials ensures that employees always have access to the latest information and best practices.



## 04. Intelligent Content Recommendations

An advanced AI-powered learning platform should include intelligent content recommendation engines that suggest relevant courses and resources based on the learner's past behavior, interests, and performance. Choosing an AI-powered LMS with this feature will ensure that your employees adapt to the culture of continuous learning.

### Why is it important?

Intelligent content recommendations keep learners engaged by providing them with materials that are directly relevant to their learning needs and career goals. This feature enhances the overall learning experience by ensuring that learners spend their time on content that is most beneficial to them. For instance, if an employee has completed a course on basic project management, the system might recommend advanced project management courses or related topics like team leadership.

## 05. Intelligent Content Recommendations

An advanced AI-powered learning platform should include intelligent content recommendation engines that suggest relevant courses and resources based on the learner's past behavior, interests, and performance. Choosing an AI-powered LMS with this feature will ensure that your employees adapt to the culture of continuous learning.

### Why is it important?

Intelligent content recommendations keep learners engaged by providing them with materials that are directly relevant to their learning needs and career goals. This feature enhances the overall learning experience by ensuring that learners spend their time on content that is most beneficial to them. For instance, if an employee has completed a course on basic project management, the system might recommend advanced project management courses or related topics like team leadership.



# Chapter 06

## Conclusion

The integration of AI in employee learning is no longer a luxury—it's a necessity for organizations aiming to thrive in today's fast-paced business environment. AI-powered LMS platforms offer unparalleled opportunities for personalized learning, real-time feedback, and efficient content creation, driving both employee engagement and business growth.

Adopting an AI-powered LMS is essential for staying competitive and fostering a culture of continuous improvement. Tenneo LMS stands at the forefront of this revolution, offering advanced AI capabilities that ensure your workforce is always ahead of the curve. Embrace the future of learning with Tenneo LMS and unlock the full potential of your organization.

If you are ready to redefine your learning strategy and link learning with performance, [schedule a free demo with our experts](#). Understand how Tenneo will help you empower your workforce to achieve seamless success!

Be part of the LearnTech Revolution. Be part of the Tenneo Community.







# Tenneo



[www.tenneo.com](http://www.tenneo.com)



[info@tenneo.com](mailto:info@tenneo.com)

Seamless  
Success

